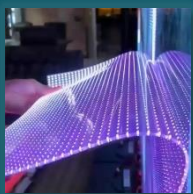


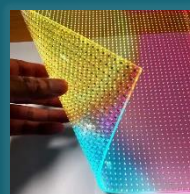
## THE FUTURE OF FLEXIBLE TRANSPARENT LED SCREEN

High Transparency | Advanced LED | Low Power | Easy to Install

ImagePath™ ClearView LED RF Flexible Transparent LED Screen product is not only a creator of visual feasts but also an environmentally friendly advocate. Flexible transparent LED screen is a display technology that combines the properties of flexibility, transparency, and light-emitting diodes (LEDs) to create a unique visual experience. Flexible transparent LED screens are designed to be bendable and allow light to pass through them



Flexible for any curved surface and Easy to install. No steel structure is required, just stick the thin screen slightly and connect the power signal. Self-developed glue can be directly attached to the glass



Advanced light-emitting diodes (LEDs). Integrated light and drive, high reliability, mini LED device, industry leading



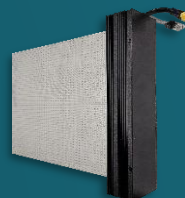
High refresh rate increased to 3840 Hz



Integrated into the substrate high light transmittance of more than 90%, so ClearView RF has ultra high transparency

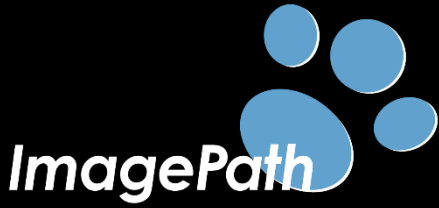


Less energy consumption which greatly reduces usage costs, Eco-Friendly



Hidden inside within this Interface Box are components that facilitate connectivity to the processing system devices

# Ultra High Transparency



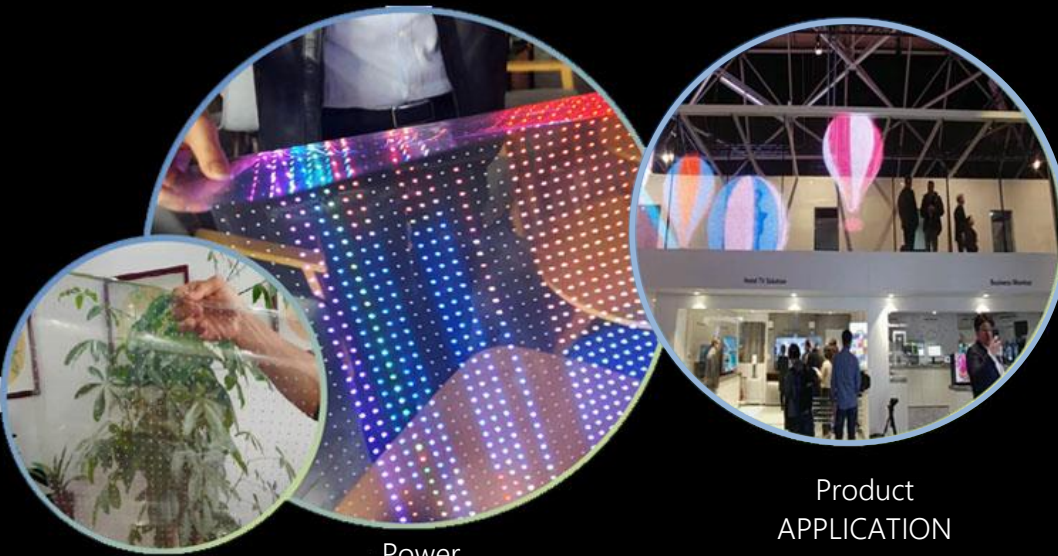
ImagePath™ ClearView LED RF  
Transparent LED Screen ensures that the  
directed light passes through the windows  
with high-through experience in clearview



ClearView LED RF

Others product

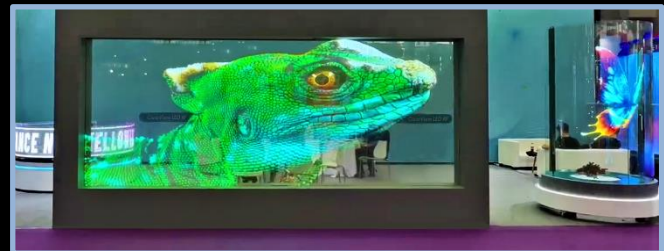
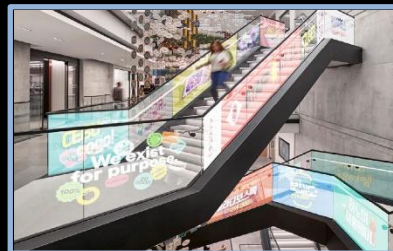
# Flexible LED Screen and Easy Installation



Power  
OFF

Power  
ON

Product  
APPLICATION





ImagePath™ ClearView LED RF Flexible Transparent LED Screen is Ultra-thin and lightweight, bendable, adapt to the arc structure, and has many advantages such as energy saving, safety and beautiful appearance.

ImagePath™ ClearView LED RF, Flexible Transparent LED Screen will create the future

SPECIFICATION						
Type	CV RF5	CV RF6	CV RF8	CV RF10	CF RF15	CF RF20
Pixel Pitch (mm)	P5	P6.25	P8	P10	P15	P20
Resolution pixels (WxH)	200x64	160x64	125x50	100x40	66x26	50x20
Transparency	90%	90%	92%	94%	94%	95%
Module Size (WxH)(mm)	1000x320	1000x400	1000x400	1000x400	990x390	1000x400
Module Thickness	2.0 mm					
Interface Box (WxDxH)(mm)	44x59x400					
Interface Type	MR60, RJ45					
Brightness*	2000 cd/m <sup>2</sup> (typ.)					
View Angle	160°					
Refresh Rate	3840 Hz					
Max power	600w/m <sup>2</sup>					
Typical power	200w/m <sup>2</sup>					
Input voltage	AC100-240V 50/60Hz					
Grayscale level	16 bit, static state					
Processing system	Nova/Colorlight					
Lifetime	up to 100.000 hours					
Weight	1.3 kg					
UV resistance	up to 10 years					
Flame retardant	grade V1					
Operating Temperature	-20~55°C					
Operating Humidity	10-90% RH					

\* Available in High Brightness 4000 cd/m<sup>2</sup> (typ.)

ImagePath Display Company USA

[www.image-path.com](http://www.image-path.com)

Powerful | Interactive | Collaborative

